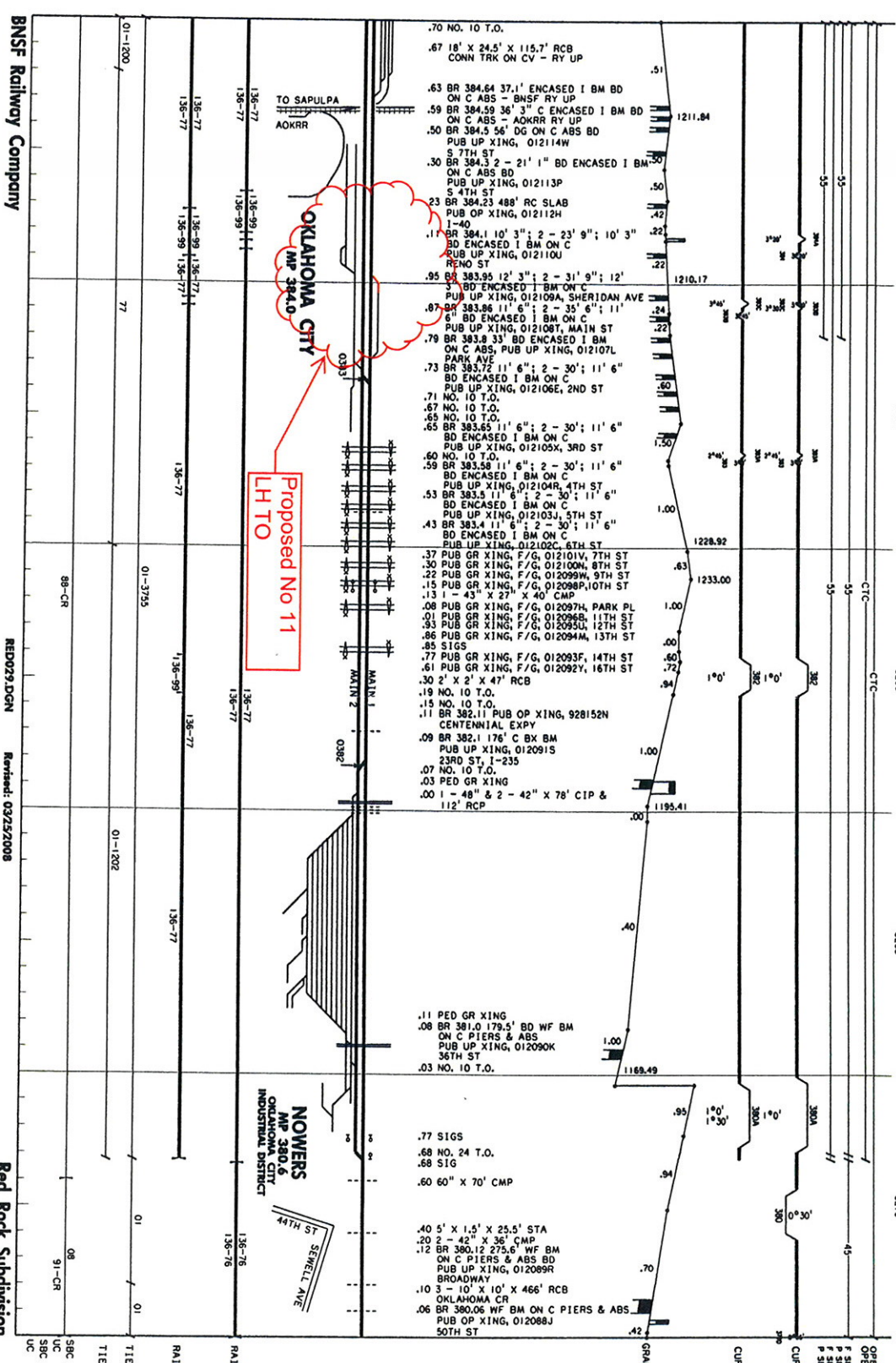


OKLAHOMA CITY, OKLAHOMA; SANTA FE STATION SWITCH AND TRACK ADDITION



The southern tie-in location as it exists today; the project would re-tie this location to the BNSF Railway Company Main 1.



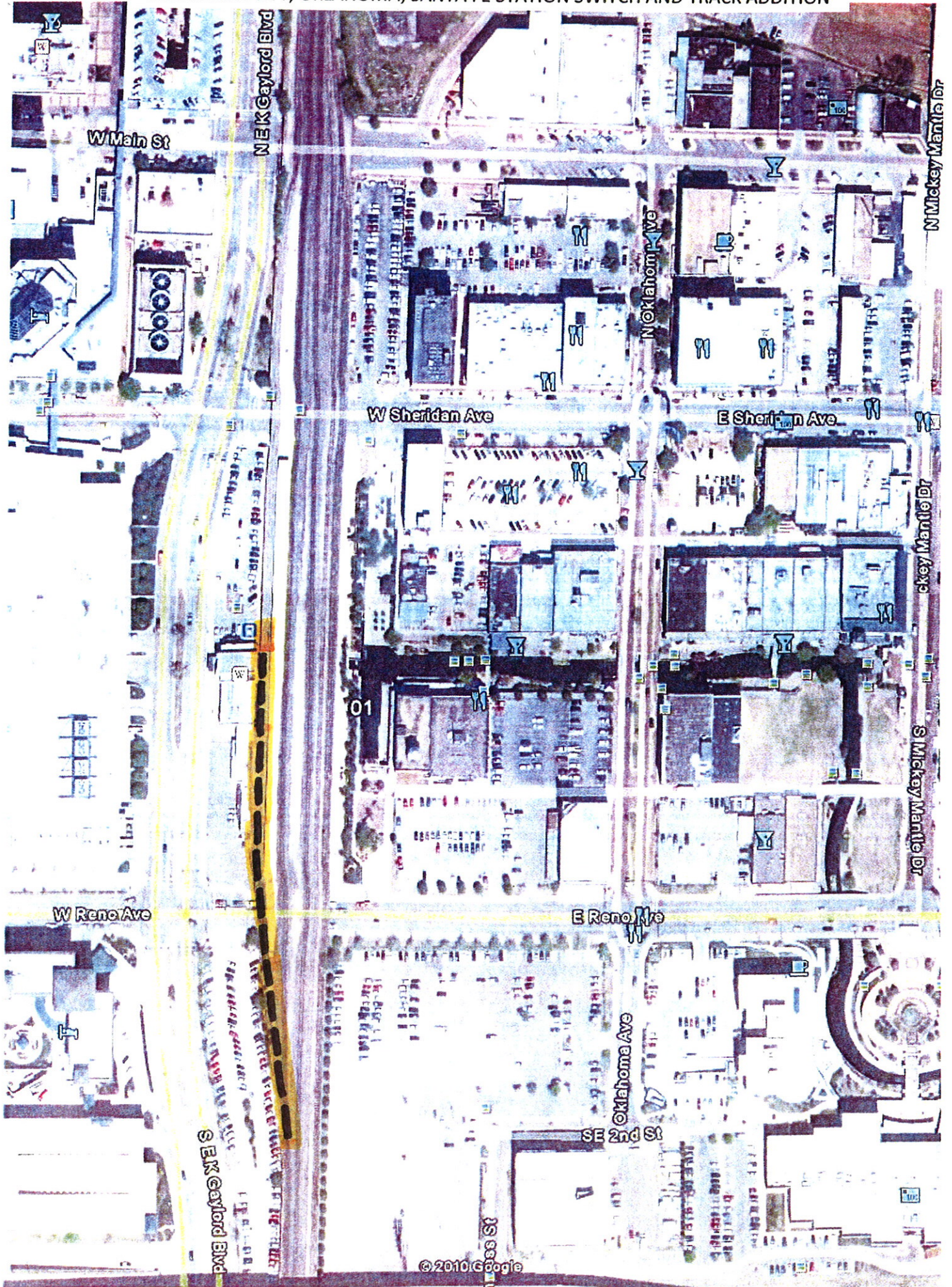
Proposed No 11
 LHTO

BNSF Railway Company

RED025 DGN Revised: 03/25/2008

Red Rock Subdivision

OKLAHOMA CITY, OKLAHOMA; SANTA FE STATION SWITCH AND TRACK ADDITION





July 28, 2010



Mr. Johnson Bridgwater
Rail Programs Division
Oklahoma Department of Transportation
200 NE 21st, Room 3D6
Oklahoma City, Oklahoma 73105-3204

Dear Mr. Bridgwater:

The National Railroad Passenger Corporation (Amtrak) would like to take this opportunity to express its support for the Oklahoma Department of Transportation's (ODOT) High Speed Intercity Passenger Rail ("HSIPR") grant application for the Oklahoma City Station Platform Track Improvement Project, proposed to be funded pursuant to the U.S. Department of Transportation Appropriations Act of 2010.

At this time, we have an exciting opportunity to advance projects that are integral to realizing the Obama Administration's vision for high speed intercity passenger rail service. Based on the information made available to us by ODOT regarding this project's eligibility, and subject to the development of such project-specific agreements as FRA may require, we support ODOT's application to fund this project under the HSIPR program because we believe that these improvements, upon their completion, could provide important benefits to Amtrak's state-supported "*Heartland Flyer*" intercity passenger rail service.

The advancement of projects like these will help develop reliable high speed and quality intercity passenger rail service in our nation. By copy of this letter, we are informing the FRA of our support for this project and we look forward to the opportunities to improve intercity passenger rail that the HSIPR program will provide.

Sincerely,

A handwritten signature in blue ink that reads "Michael W. Franke".

Michael W. Franke
Assistant Vice President Policy and Development, Central

cc: The Honorable Joseph C. Szabo
Administrator Federal Railroad Administration
U.S. Department of Transportation
West Building, W30-308
1200 New Jersey Avenue, SE
Washington, D.C. 20590



Dean H. Wise
Vice President
Network Strategy

**Burlington Northern
Santa Fe Corporation**
2500 Lou Menk Drive
Fort Worth, TX 76131
tel 817.593.3156
fax 817.352.7154
dean.wise@bnsf.com

August 6, 2010

Mr. Joe Kyle
Division Manager, Rail Programs
Rail Programs Division
Oklahoma Department of Transportation
200 N.E. 21st Street
Oklahoma City, OK 73105

Dear Mr. Kyle:

BNSF Railway and the State of Oklahoma have a history of success implementing projects which improve passenger rail service without degrading present or future freight service. BNSF looks forward to working with you to pursue the same proven principles which have guided development of Oklahoma's Amtrak passenger rail network, enabling BNSF to achieve one of the highest host railroad on-time passenger rail service performance records in the industry.

Our respective staffs have worked to identify the Oklahoma City Station Improvement project, which could bring benefit to Amtrak's passenger rail program in Oklahoma. We support your efforts to move forward with this project in a manner consistent with the long-standing practices of our organizations. BNSF is prepared to begin work as soon as appropriate once negotiated contracts between Oklahoma DOT and BNSF are in place and a Notice to Proceed is received.

BNSF's support for moving forward with this project is premised upon the following:

- The basic structure of the contemplated transactions, including measurement of public benefits, must be consistent with existing BNSF agreements with Amtrak and Oklahoma.
- Satisfactory review of the overall financial and operational impact to BNSF including any federal funding requirements.
- The estimated public benefits that may accrue to Amtrak passenger service as a result of this project are subject to final design engineering as well as additional modeling and other empirical analysis as project improvements are developed and placed in service.

BNSF and I appreciate this opportunity to enhance passenger rail operations in the State of Oklahoma.

Sincerely,

Dean Wise
Vice President, Network Strategy